

Friday 3rd December
2021



Penwortham Girls'
High School

Important Dates:



17th December
**Closure for Christmas at
1.30pm**

20th December – 3rd
January
Christmas Closure

Tuesday 4th January
**Re-open for Year 7 and
11 only (Year 8, 9, 10 to
come in for testing only
– specific times to be
confirmed)**

Wednesday 5th January
All years in school



Stem Festival

Our next festival is called 'STEM Festival' where we will be celebrating all topics on Science, Technology, Engineering and Maths.

We are looking to hold a careers 'speed dating' event on Monday 7th March for our current Year 10 and 11 students. The aim of the day is to showcase careers and inspire the younger generation. The day will run from 10am until 3pm with lunch provided. You will be asked to talk about your career and about your job the routes you took to get into your current position and what skills you need. The girls will come up with some insightful questions for you to answer too. So, if you have a job anything to do with Science, Technology, Engineering or Maths and can get involved on this day please let me know by emailing:
r.honeyman@penworthamgirls.lancs.sch.uk

If you know of any family members or other adults who would like to help, please ask them to email me.

Thank you to those who have already contacted me.



*Mrs Honeyman
Curriculum Leader for Science*



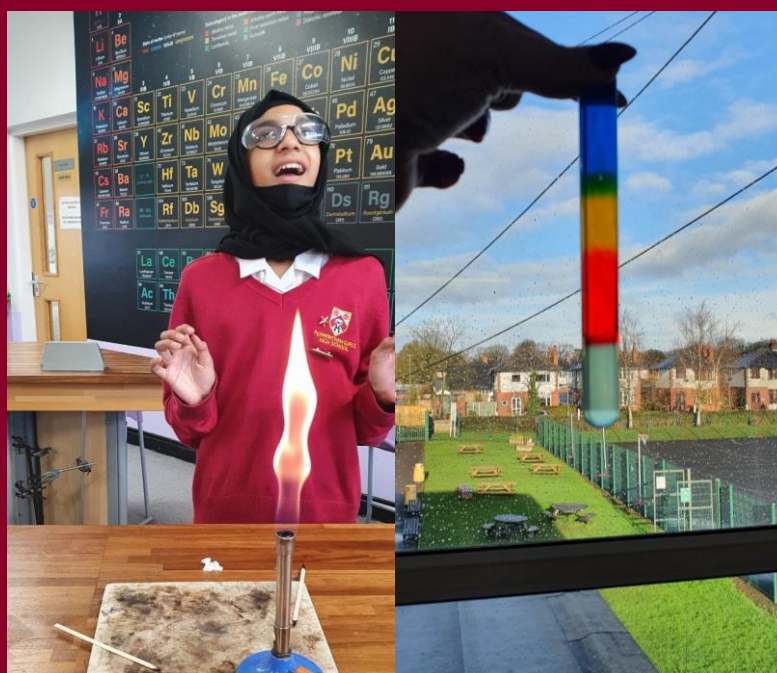
Friday 3rd December
2021



Penwortham Girls'
High School

Science Club

This year, Science Club has started off with a bang! A large group of keen scientists have been taking part every Wednesday lunch time in a wide range of fun and exciting scientific experiments, investigations and challenges. So far, students have created and raced balloon rockets, explored the wonders of acids and alkalis, used the chromatography technique to create butterflies, had some fun making flaming ghosts at Halloween, learnt a technique to create a density tower. Science club is open to all Year 7 and Year 8 students. Anyone wanting to attend can just turn up and get involved on Wednesday lunch times at 12:45.



Miss Forrest,
Science Department

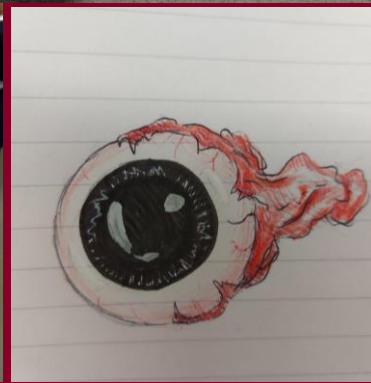
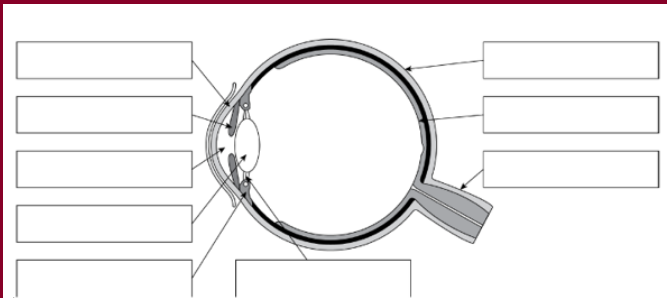
Friday 3rd December
2021



Penwortham Girls'
High School

Year 11

This week in Biology we have been learning about the structure of the eye. Students had the opportunity to dissect an eye and look at the structures in more detail. How many features do you know?



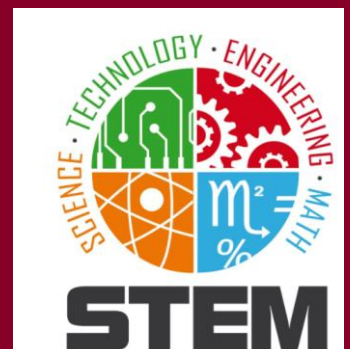
*Mrs Honeyman,
Curriculum Leader for Science*

STEM Club Update

It's an exciting time at STEM club. We have been learning how to programme our LEGO robots! These robots are able to do many things, such as move items from place to place, follow lines of colour and they can stop when they sense an obstruction. We entered a national competition that gives us the chance to win money for the school and also attend the Big Bang Science Fair in Birmingham in March. The students have been great so far and have managed to programme the robot to follow a set route. They now have to work with an environmental theme and make the robot do 8 tasks within 5 minutes.

If any other students would like to attend STEM club, we meet every Monday after school in Room 34. Come down and join us!

Mr Dean, Science Department



Friday 3rd December
2021



Penwortham Girls'
High School

Organic Chemistry

This half-term, year 11 have started their Organic Chemistry topic, in which they will learn about the structure and properties of carbon-based molecules. One of the most important families of molecules is alkanes, a key constituent of crude oil. To give this topic some context, all of year 11 had a talk about the energy industry, given by a former oil industry worker (me). I talked the pupils through the uses of crude oil, the demand for it and how it is obtained.

The girls learned about life on oil rigs and had a chance to discuss the pros and cons of a career in the industry, discussing the pay, career progression, working conditions and environmental impact. The talk closely followed the COP26 talks and linking to that, we looked at other careers within the energy industry. To help the girls to understand the trends in energy use and the growth industries of the future, we were fortunate to be joined by an Energy Industry Analyst from Scottish and Southern Energy. Hopefully, for some of the girls, this sparked an idea that might lead them to a successful career in the energy industry.



Mr Coogan
Science Department

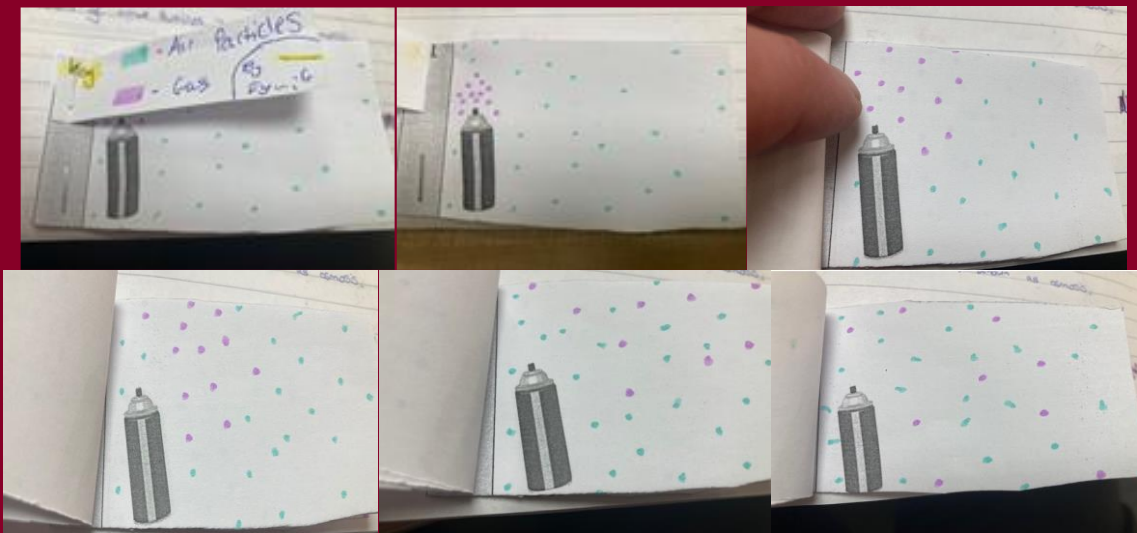
Friday 3rd December
2021



Penwortham Girls'
High School

Diffusion – Movement into and Out of Cells

The year 7 students have been studying biology this half term, learning about the structure of cells. Understanding the role of diffusion in the role of exchange of substance across cell membranes is a concept that underpins many aspects of biology. This includes the adaptations of organs such as the lungs and the small intestine, where exchange of substances is vitally important. The year 7s have enjoyed making flip books to help them understand how particles move from areas of high concentration to areas of lower concentration.



Mr Knee
Science Department

Waves

As part of the ten big ideas in Science, Year 8 are learning about light in the unit of 'Waves'. They have used the ray boxes to understand reflection and refraction. They have also looked at how a camera works and have produced some information leaflets based on their own research. They also had the opportunity to make a pin hole camera. Students enjoyed making them and looking through them across the school field. They were surprised to see that the image formed was upside down, helping them to understand how we see objects and how a camera works. For the rest of the unit, they will be looking at the eye, how we see objects, different lenses and dispersion of light.

Mrs R Cahill
Science Department



Friday 3rd December
2021



Penwortham Girls'
High School

Graphene – the New 'Wonder' Material

Year 10 have recently studied graphene in Chemistry Unit 2 Bonding, structure and properties of matter.

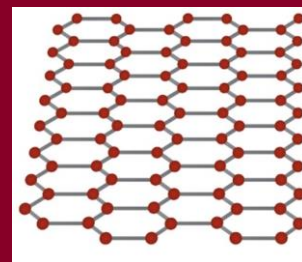
Graphene was only isolated from graphite in 2004 by two researchers at Manchester university, Prof Andre Geim and Prof Kostya Novoselov. Their discovery led to them being awarded the Nobel prize in Physics in 2010. Subsequently, the National Graphene institute was set up in Manchester in 2015.

This one atom thick material is now set to revolutionise almost every part of daily life.

Graphene is stronger than steel, yet incredibly lightweight and flexible.

It can conduct electricity and thermal energy and is also transparent.

One new use of graphene has just recently hit the headlines as it is going to be used to resurface parts of the A1 motorway in Northumberland. This work will hopefully produce a stronger road that could lengthen the motorway's lifespan. The resurfacing could also improve driver safety and reduce the frequency of roadworks because the road will be more durable. The uses of graphene could be endless!



To find out about more applications, visit this website:

<https://www.graphene.manchester.ac.uk/learn/applications/>

Mrs Goodwill
Science Department



Friday 3rd December
2021

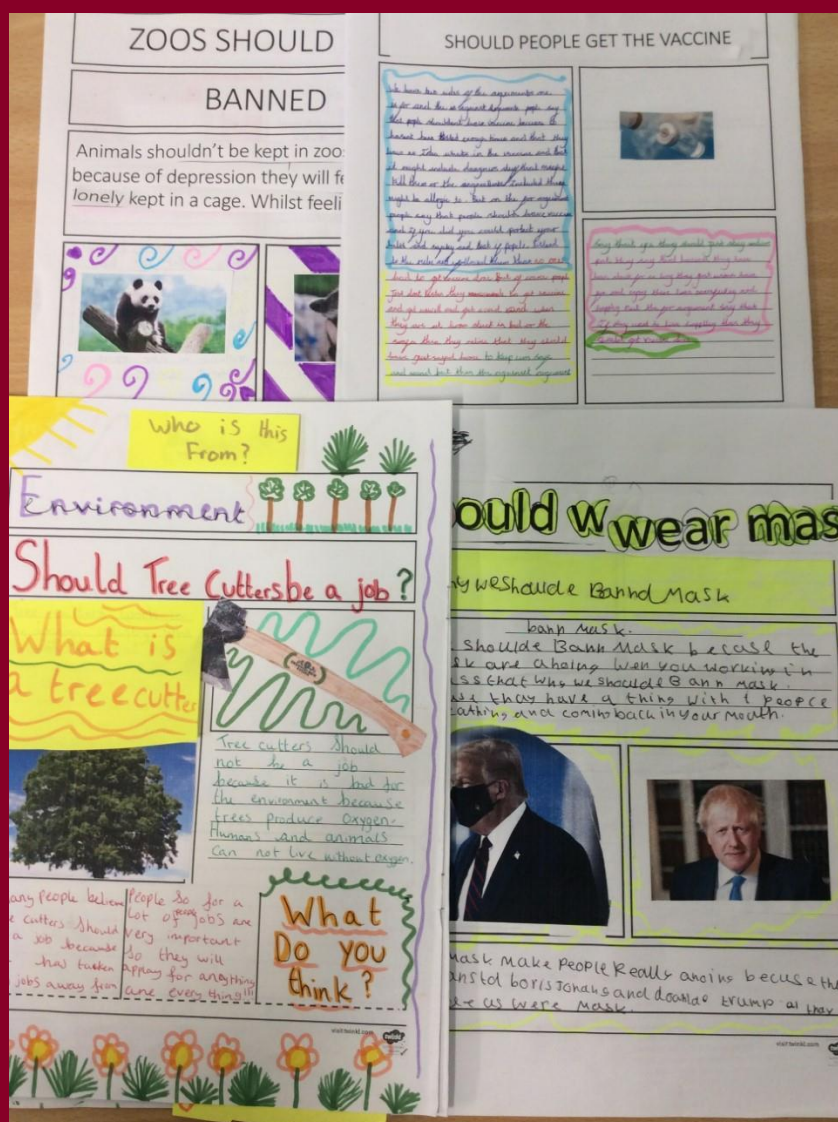


Penwortham Girls'
High School

Year 7 Language and Literacy Festival

As part of the Language and Literacy Festival, Mrs Hall's class in Year 7 took on the role of news reporters. They wrote opinion pieces on a variety of science-related topics including, 'Are zoos cruel?', 'Are face masks necessary?' and 'Should vaccines be compulsory?'

As part of the task, they had to research facts, statistics, and other quantitative information to inform their articles. Mrs Woodhouse commented that the finished articles were very impressive, showing a fantastic range of vocabulary and writing styles.



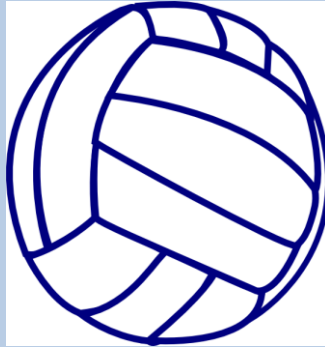
Mrs Hall
Deputy Headteacher

Friday 3rd December
2021



Penwortham Girls'
High School

Netball Results



On the 1st December, Year 11 played an away game against All Hallows, securing a 11-20 WIN!
The team played really well through all 4 quarters to secure a comfortable win. Well done to all girls!
Players' player: Darcey W
Coaches' player: Grace S



Non-Uniform Day and Early Closure on Friday 17th December

The school will close at 1.30pm on the last day of term. Students will eat their lunch in school at the normal time.

The school buses have been notified of the change of times on this day.

Friday 17th December is also Non-Uniform Day. Students are welcome to wear a festive related outfit, for example, a Christmas jumper if they wish.

We are asking students to please bring in £1; monies raised will go to local charities.



Friday 3rd December
2021



Penwortham Girls'
High School

Brilliant Behaviour

Our students continue to accumulate vast numbers of positive points and at the time of writing were up to an impressive 3778 points. The rolling totals for the year are shown below and Year 7 are leading the way on positive points, with Year 9 still close behind!

Year 7	9616
Year 8	7774
Year 9	8701
Year 10	6739
Year 11	4442

Some Year 7 students have been working so hard this term that they've already gathered enough medals to gain the Gold Certificate; no mean feat! An amazing achievement and congratulations to these students:

Sundas A-L (7RCH)
Abeeha F (7GFO)
Evie F (7GST)
Sana H (7GST)
Holly L (7GFO)
Scarlett S (7RCH)
Caitlin T (7RCH)



A particular highlight of the week for me was the Buddy Form session earlier this week. Students from different year groups worked together to complete their community project and between made them a fantastic contribution to their local community. Some wrote letters to local councillors about issues like loneliness and homelessness. Others made Christmas cards or Christmas gift packs to distribute to the elderly. These are just some of the projects that girls have been working on since September. At the time of writing, 75 students have been given positive points for being Community Champions and no doubt that number will grow as we head towards the end of term.

Mr Ramsdale, Senior Assistant Headteacher

Friday 3rd December
2021



Penwortham Girls'
High School

Penwortham Christmas Markets Donations for Tombola Prizes

On December 15th, we (Head Girl, Deputy Head Girl, Mrs Pomeroy & Mrs Hall) will be running a tombola stall at Penwortham Christmas Markets.

We will be raising money for the Soroptimists' food bank. One £5 donation is enough to feed one child in Swaziland for a month.

It would be greatly appreciated if you could donate a tombola prize to help us raise money for this important cause.

This could be items such as chocolate, and cosmetics.

Please make sure that all donations are in school by Tuesday the 14th of December, Thank You.

Reminder about Car Parking

We have had a number of incidents and complaints recently from Hardwick Grange Retirement Homes across the road from school. Please can we remind parents/carers not to park on this car park when dropping off/collecting students as this is a private car park for their residents. Please park on the public road away from the zigzag lines. Thank you for your support and cooperation.

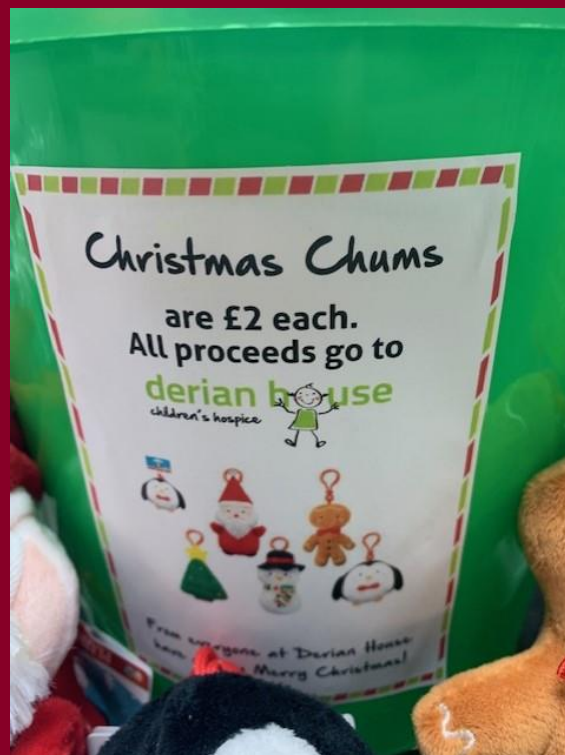
Friday 3rd December
2021



Penwortham Girls'
High School

Christmas Chums and Ginger Bread Friends

Christmas Chums and Ginger Bread Friends are for sale on school reception. They are £2 each and make lovely Christmas baubles! All proceeds go to Derian House Children's Hospice.

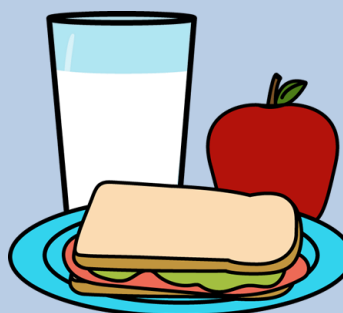


Friday 3rd December
2021



Penwortham Girls'
High School

Lunch Menu Week Commencing 13th December (Week 2)



High School Spring/Summer 2021 Menu

Week 2	Monday	Tuesday	Wednesday	Thursday	Friday
Traditional Choice Meal Deal	Pork Meatballs with Creamy Peppered Sauce Crispy Paprika Potatoes Fine Green Beans & Carrot Batons	Chunky Fish Fingers with Herby Potatoes Mixed Vegetable Medley & Lemon Mayonnaise	Roast of the Day with Traditional Trimmings Roast & Mashed Potatoes & Seasonal Vegetables	Ploughman's Pie with Creamy Mashed Potatoes Broccoli Florets & Carrot Batons	Crispy Battered Fillet of Fish with Chips & Mushy Peas
Global Choice Meal Deal	BBQ Chicken Flatbread with Crispy Paprika Potatoes Homemade Coleslaw & Mixed Salad	Beef Madras Curry with Turmeric Rice & Coriander Naan	Chicken & Leek Lasagne with Garlic Bread & Green Leaf Salad	Seafood Paella with Green Leaf Salad & Crusty Bread	Homemade Cheese & Tomato Calzone Pizza with Chips & Mixed Salad
Vegetarian Choice Meal Deal	Vegetarian Chilli Tortilla Basket with Mixed Rice	Cheddar Cheese Whirl with Herby Potatoes & Baked Beans	Vegetarian Sausages with Yorkshire Pudding Roast & Mashed Potatoes & Seasonal Vegetables	Tomato & Mascarpone Pasta with Roasted Vegetables & Garlic Dough Balls	Vegetable Korma Curry with Turmeric Rice & Coriander Naan
Meal Deal Sandwich or Baked Potato	Choice of Hot or Cold filled Sandwich or Choice of filled Baked Jacket Potato with Mixed Salad	Choice of Hot or Cold filled Sandwich or Choice of filled Baked Jacket Potato with Mixed Salad	Choice of Hot or Cold filled Sandwich or Choice of filled Baked Jacket Potato with Mixed Salad	Choice of Hot or Cold filled Sandwich or Choice of filled Baked Jacket Potato with Mixed Salad	Choice of Hot or Cold filled Sandwich or Choice of filled Baked Jacket Potato with Mixed Salad
Desserts of the Day	Carrot & Orange Cake	Summer Fruit Crumble & Ice Cream	Jam & Coconut Sponge & Custard	Seasonal Berry Eton Mess	Chocolate Brownie & Chocolate Sauce
	Chocolate Cookie	Lemon Muffin	Ginger Cookie	Chocolate Muffin	Banana Flapjack
	Fresh Fruit or Fruit Yoghurt	Fresh Fruit or Fruit Yoghurt	Fresh Fruit or Fruit Yoghurt	Fresh Fruit or Fruit Yoghurt	Fresh Fruit or Fruit Yoghurt

Newsletter

Friday 3rd December
2021



Penwortham Girls'
High School

breakfast and morning break

Your menu

Cereals & Fresh Milk 60p

Hot Buttered Toast 25p

Buttered Crumpet 40p

¼ Plain Bagel 40p

Fruit Teacake 40p

Boiled/ Scrambled or Poached Egg 35p

Egg/ Beans or Cheese on Toast 70p

Baked Hash Brown 40p

Sausage Barm £1.20

Pizza and Garlic Bread (morning break only)

Freshly Baked Pizza	£1.00	Freshly Baked Pizza with Topping (1/2 Portion)	70p
Freshly Baked Pizza (1/2 Portion)	60p	Homemade Garlic Bread	70p
Freshly Baked Pizza with Topping	£1.15	Homemade Cheesy/ Tomato Garlic Bread	75p

Drinks

Tea 40p

Coffee 50p

Hot Chocolate 50p

Fruit Juice from 65p

Extras

Fruit Yoghurt 45p

Frozen Yoghurt or Smoothie 50p

Piece of Fresh Fruit 30p

Fresh Fruit Bags/ Fruit Salad 70p

Large Fresh Fruit Salad £1.00

Sauce Sachet from 10p

Flora Portion 15p

faster fresher fitter

Lancashire

County Council

www.lancashire.gov.uk

cold deli

Your menu

Freshly Made Sandwiches

Regular Range - Plain Egg, Cheese, Ham, Tuna £1.20

Premium Range - Any other Fillings £1.70

Filled Baguettes, Wraps and Speciality Breads £1.95

Add Salad to any of the above 15p

Pasta Salad Pots from £1.20

Fresh Salad Pots from £1.20

Plated Salads from £1.55

* Please see separate tariff for our speciality range of sandwiches

Drinks

Calypso AquaJuice 330ml 75p

Calypso AquaJuice Carton 200ml 50p

Milk Carton 250ml 45p

Fruit Slush 7oz 90p

Fair Trade Fruit Juice Carton 200ml 70p

Water 330ml 65p

Water 500ml 80p

Radnor Fruit Still Water 90p

Radnor Fruit Fizz 75p

Tropicana Fruit Juice 180ml 95p

Tea 40p

Coffee 50p

Hot Chocolate 50p

Sandwich Meal Deal

Add up to 3 pick and mix items to enjoy a great value meal deal

only £2.30

desserts

Cookies / Cakes and Desserts

Home Produced Cakes, Flapjack and Energy Bar 80p

Home Produced Cookies 40p

Hot Dessert of the Day with Sauce 75p

Extras

Fruit Yoghurt 45p

Frozen Yoghurt/Smoothie 50p

Piece of Fresh Fruit 30p

Fresh Fruit Bags/Fruit Salad 70p

Large Fresh Fruit Salad £1.00

Sauce Sachet from 10p

Flora Portion 15p

faster fresher fitter

Lancashire

County Council

www.lancashire.gov.uk

hot counter

Your menu

Main Meals

Served with Accompaniments

only £2.00

Main Meal Deal

Served with Hot Dessert and Sauce or Piece of Fruit of Yoghurt or Carton of Juicy Water

only £2.30

Fish Fingers x3 £1.20

Veggie Burger £1.00

Meat Free Sausages x2 £1.00

Freshly Baked Omelette £1.00

Homemade Soup 7oz with Crusty Bread 65p

Homemade Soup 12oz with Crusty Bread 90p

Baked Jacket 75p

Baked Jacket with 1 filling from £1.00

Baked Jacket with 2 fillings from £1.50

Snacks to Go

Burger in a Bun £1.80

Hot Sandwiches and Filled Panini from £2.00

Hot Baguettes and Wraps £2.00

Homemade Margherita Pizza £1.00

Add Extra Toppings from 15p

Homemade Garlic and Herb Bread 70p

Homemade Garlic and Herb Bread ¼ Portion 40p

Homemade Cheesy/ Tomato Garlic Bread 75p

Extras

Chips/Fries/Wedges/Hash Browns £1.10

All Other Potato Choices 65p

Fresh Vegetables/Side Salads/Baked Beans 45p

Rice/Pasta/Noodles 65p

faster fresher fitter

Lancashire

County Council

www.lancashire.gov.uk

Friday 3rd December
2021



Penwortham Girls'
High School

Do you need
careers
advice?

Independent Careers Adviser

Shamim Khan

Available for 1:1 Careers Appointments & Drop In sessions in
The Careers Room (Situating first floor next to the ICT Suite)

Drop In sessions Times:

Morning : 8.30am to 9.10am
Lunchtime : 12.30pm to 1.20pm

Careers Adviser Dates:

September 2021	<ul style="list-style-type: none">• Wednesday 8th September 2021• Wednesday 15th September 2021• Wednesday 22nd September 2021• Wednesday 29th September 2021
October 2021	<ul style="list-style-type: none">• Wednesday 6th October 2021• Wednesday 13th October 2021• Wednesday 20th October 2021
November 2021	<ul style="list-style-type: none">• Wednesday 3rd November 2021• Wednesday 10th November 2021• Wednesday 17th November 2021• Wednesday 24th November 2021
December 2021	<ul style="list-style-type: none">• Wednesday 1st December 2021• Wednesday 8th December 2021• Wednesday 15th December 2021

If you would like a 1:1 appointment, please email:

careers@penworthamgirls.lancs.sch.uk

Registered Professional Careers Practitioner/Member



Friday 3rd December
2021



Penwortham Girls'
High School

Head's Breakfast

Elyse F, Olivia S, Lola U, Stevie M, Jess B, Esha C, Sophie M, Maryam M, Grace K, Molly C, Elijah K, Enya H, Saniya P, Amber I R, Maia F (Year 10)

For excellent roller coaster designs in Physics.

Katie K, Evie C, Eve B, Megan H, Louise P-R (Year 10)

Contributing to Anti-Bullying Week (English).

Naomi S (Year 7)

Taking work home to finish because she wanted to in Life Skills, without any prompting! Well done! (Life Skills)

Leah C, Ruby T (Year 8)

Excellent photography shoot done at home. Well done! (Photography)

Cassie-F B (Year 8)

An incredible amount of work completed on our Anti-Bullying Week tasks. A brilliant story with fantastic illustrations. Above and beyond expectations!

Grace D and Florence B (Year 8)

Working as a team, helping and coaching others throughout the whole practical lesson of baking bread rolls. (Food Tech)

Erin A (Year 7)

For making Christmas cards and decorations at home for the care home campaign.

Head's Commendations

Evie A, Ruby D E (Year 7)

Beautiful work on Alice in Wonderland front covers (English).

Maddie R (Year 7)

Being pro-active in the food room and helping out whenever needed.

Tanisha S (Year 7)

Consistently high efforts in German and reading numerous German stories on the advanced level on Duo Lingo in her own time as extra work.



Friday 3rd December
2021



Penwortham Girls'
High School

Sports, Clubs & Societies – Year 7

YEAR 7 SPORTS, CLUBS AND SOCIETIES					
	MONDAY	TUESDAY	WEDNESDAY	THURSDAY	FRIDAY
MORNING	Quiet room * Rm 7 AHA	Quiet room * Rm 7 AHA	Quiet room * Rm 7 AHA	Quiet room* Rm 7 KMG	Quiet room * Rm 7 AHA
LUNCH	Geography society Rm 39 GBO Cooking society Rm 23 SSC Computing society Rm 50 JBE Table tennis Gym MSH BASKETBALL Courts KFI Product design Rm 36 LGO	Choir Rm 11 VLI Athletics Gym KFI Cross country Courts MSH Brass Group Rm 15 ACA DEBATE club Rm 1 CWO MATHS HEGARTY Club Rm 50 RMV/RCA/SHS	Science club Rm 47 GFO Keyboard/Ukulele club Rm 15 ACA French and German film society Rm 26 KGI Cheer Gym RSN Circle time * Rm 6 DEM	Woodwind group Rm 15 ACA Soroptimists Rm 30 MBR Badminton Gym MSH Ultimate frisbee Courts SNA Hw Club * Rm 35 LVE Mfl spelling bee Rm 26 CGE	Chess society Rm 39 BWA Orchestra Rm 15 ACA History society Rm 37 JBR Multi-sport Gym KFI Craft society Rm 1 DEM & RLU MINDFULNESS CLUB* Rm 6 KMG BEDROCK CLUB (+ English Support) Library CWO & DSN
AFTER SCHOOL	STEM Rm 34 RFR/PDE/SCH NETBALL Courts SNA, MSH & KFI	DRAMA SOCIETY Hall AGA & GST DANCE CLUB Dance studio SNA HANDBALL Courts MSH BADMINTON Gym KFI	GYMNASTICS Gym MSH FOOTBALL Courts KFI	HOCKEY Courts RWO CRICKET TBC	

* INVITE ONLY

Friday 3rd December
2021



Penwortham Girls'
High School

Sports, Clubs & Societies – Year 8

YEAR 8 SPORTS, CLUBS AND SOCIETIES					
	MONDAY	TUESDAY	WEDNESDAY	THURSDAY	FRIDAY
MORNING	Quiet room * Rm 7 AHA	Quiet room * Rm 7 AHA	Quiet room * Rm 7 AHA	Quiet room* Rm 7 KMG	Quiet room * Rm 7 AHA
LUNCH	Computing society Rm 50 JBE Table tennis Gym MSH BASKETBALL Courts KFI Product design Rm 36 LGO	Athletics Gym KFI Cross country Courts MSH Circle time * Rm 1 NBY Brass Group Rm 15 ACA DEBATE CLUB Rm 1 CWO MATHS HEGARTY Club Rm 50 RMV/RCA/SHS	Science club Rm 47 GFO Keyboard/Ukulele club Rm 15 ACA French and German film society Rm 26 KGI Cheer Gym RSN	Woodwind group Rm 15 ACA Soroptimists Rm 30 MBR Badminton Gym MSH Ultimate frisbee Courts SNA Hw Club * Rm 35 LVE Choir Rm 15 VLI	Chess society Rm 39 BWA Orchestra Rm 15 ACA History society Rm 37 JBR Multi-sport Gym KFI Craft society Rm 1 DEM & RLU BOOK CLUB Rm 4 DSN MINDFULNESS CLUB* Rm 6 KMG BEDROCK CLUB (+ English Support) Library CWO & DSN
AFTER SCHOOL	STEM Rm 34 RFR/PDE/SCH NETBALL Courts SNA, MSH & KFI	DRAMA SOCIETY Hall AGA & GST DANCE CLUB Dance studio SNA HANDBALL Courts MSH BADMINTON Gym KFI	GYMNASTICS Gym MSH FOOTBALL Courts KFI	HOCKEY Courts RWO CRICKET TBC	

* INVITE ONLY

Friday 3rd December
2021



Penwortham Girls'
High School

Sports, Clubs & Societies – Year 9

YEAR 9 SPORTS, CLUBS AND SOCIETIES					
	MONDAY	TUESDAY	WEDNESDAY	THURSDAY	FRIDAY
MORNING	Quiet room * Rm 7 AHA	Quiet room * Rm 7 AHA	Quiet room * Rm 7 AHA	Quiet room* Rm 7 KMG	Quiet room * Rm 7 AHA
LUNCH	Table tennis Gym MSH BASKETBALL Courts KFI Circle time * Rm 6 LDA Product design Rm 36 LGO	athletics Gym KFI Cross country Courts MSH Brass Group Rm 15 ACA DEBATE CLUB Rm 1 CWO MATHS HEGARTY Club Rm 50 RMV/RCA/SHS	Keyboard/Ukulele club Rm 15 ACA French and German film society Rm 26 KGI	Woodwind group Rm 15 ACA Soroptimists Rm 30 MBR Badminton Gym MSH Ultimate frisbee Courts SNA Hw Club * Rm 35 LVE Choir Rm 15 VLI ANIME SOCIETY Rm 53 GMO	Chess society Rm 39 BWA Orchestra Rm 15 ACA History society Rm 37 JBR Multi-sport Gym KFI DANCE Dance Studio SNA BOOK CLUB Rm 4 DSN MINDFULNESS CLUB* Rm 6 KMG BEDROCK CLUB (+ English Support) Library CWO & DSN
AFTER SCHOOL	STEM Rm 34 RFR/PDE/SCH NETBALL Courts SNA, MSH & KFI	DRAMA SOCIETY Hall AGA & GST HANDBALL Courts MSH BADMINTON Gym KFI	GYMNASTICS Gym MSH Cooking society Rm 23 SSC TEAM CHEER Hall RSN FOOTBALL Courts KFI	HOCKEY Courts RWO CRICKET TBC	

* INVITE ONLY

Friday 3rd December
2021



Penwortham Girls'
High School

Sports, Clubs & Societies – Year 10

YEAR 10 SPORTS, CLUBS AND SOCIETIES					
	MONDAY	TUESDAY	WEDNESDAY	THURSDAY	FRIDAY
MORNING	Quiet room * Rm 7 AHA	Quiet room * Rm 7 AHA	Quiet room * Rm 7 AHA	Quiet room* Rm 7 KMG	Quiet room * Rm 7 AHA
LUNCH	Table tennis Gym MSH BASKETBALL Courts KFI Product design Rm 36 LGO Study room* Rm 11 SIB & LRI	Athletics Gym KFI Cross country Courts MSH Brass Group Rm 15 ACA DEBATE CLUB Rm 1 CWO MATHS HEGARTY Club Rm 50 RMV/RCA/SHS Poet laureate Rm 5 GST	Keyboard/Ukulele club Rm 15 ACA French and German film society Rm 26 KGI Hw Club * Rm 35 SPK	Woodwind group Rm 15 ACA Soroptimists Rm 30 MBR Badminton Gym MSH Ultimate frisbee Courts SNA Choir Rm 15 VLI ANIME SOCIETY Rm 53 GMO	Chess society Rm 39 BWA Orchestra Rm 15 ACA Multi-sport Gym KFI DANCE Dance Studio SNA Study room* Rm 11 SIB & LRI MINDFULNESS CLUB* Rm 6 KMG BEDROCK CLUB (+ English Support) Library CWO & DSN
AFTER SCHOOL	STEM Rm 34 RFR/PDE/SCH NETBALL Courts SNA, MSH & KFI	DRAMA SOCIETY Hall AGA & GST HANDBALL Courts MSH BADMINTON Gym KFI TEXTILES Rm 34 RFR Product design Rm 36 LGO	GYMNASTICS Gym MSH Ks4 Art society Rm 52 LGE TEAM CHEER Hall RSN FOOTBALL Courts KFI	MUSIC STUDIO TIME Music studio MOW HOCKEY Courts RWO CRICKET TBC	Ks4 PHOTOGRAPHY society Rm 53 GMO

* INVITE ONLY

Friday 3rd December
2021



Penwortham Girls'
High School

Sports, Clubs & Societies – Year 11

YEAR 11 SPORTS, CLUBS AND SOCIETIES

	MONDAY	TUESDAY	WEDNESDAY	THURSDAY	FRIDAY
MORNING	Quiet room * Rm 7 AHA	Quiet room * Rm 7 AHA	Quiet room * Rm 7 AHA	Quiet room* Rm 7 KMG	Quiet room * Rm 7 AHA
LUNCH	Table tennis Gym MSH BASKETBALL Courts KFI Product design Rm 36 LGO Study room* Rm 11 SIB & LRI	athletics Gym KFI Cross country Courts MSH Brass Group Rm 15 ACA DEBATE CLUB Rm 1 CWO MATHS HEGARTY Club Rm 50 RMV/RCA/SHS	Keyboard/Ukulele club Rm 15 ACA French and German film society Rm 26 KGI Hw Club * Rm 35 SPK GCSE Dance Dance Studio SNA	Woodwind group Rm 15 ACA Soroptimists Rm 30 MBR Badminton Gym MSH Ultimate frisbee Courts SNA Choir Rm 15 VLI ANIME SOCIETY Rm 53 GMO	Chess society Rm 39 BWA Orchestra Rm 15 ACA Multi-sport Gym KFI Study room* Rm 11 SIB & LRI MINDFULNESS CLUB* Rm 6 KMG BEDROCK CLUB (+ English Support) Library CWO & DSN
AFTER SCHOOL	STEM Rm 34 RFR/PDE/SCH NETBALL Courts SNA, MSH & KFI	DRAMA SOCIETY Hall AGA & GST HANDBALL Courts MSH BADMINTON Gym KFI TEXTILES Rm 34 RFR	GYMNASTICS Gym MSH Ks4 Art society Rm 52 GMO FOOTBALL Courts KFI	MUSIC STUDIO TIME Music studio MOW HOCKEY Courts RWO CRICKET TBC	Ks4 PHOTOGRAPHY Society Rm 53 GMO