



## Build a Cell Game Instructions

In groups of three, give each person a typical cell sheet and cut out all game cards.

### How to play:

- Take turns to roll the dice and collect the part of the cell that corresponds to the number you roll (as shown on the typical cell sheet).
- If you roll a number that you have already collected or a number that is not shown on the sheet, skip to the next player.
- The first player to complete their cell wins.



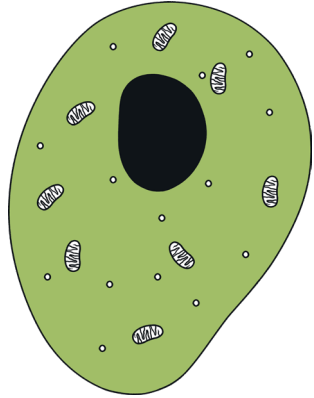
## Build a Cell Game Instructions

In groups of three, give each person a typical cell sheet and cut out all game cards.

### How to play:

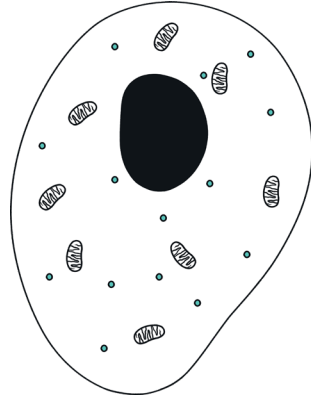
- Take turns to roll the dice and collect the part of the cell that corresponds to the number you roll (as shown on the typical cell sheet).
- If you roll a number that you have already collected or a number that is not shown on the sheet, skip to the next player.
- The first player to complete their cell wins.

cytoplasm



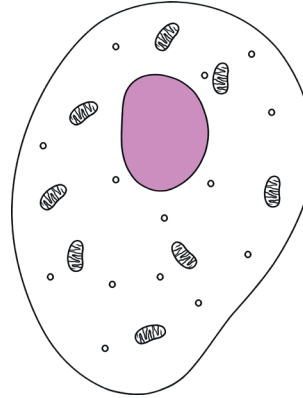
BEYOND

ribosomes



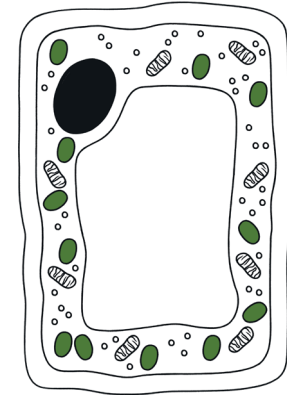
BEYOND

nucleus



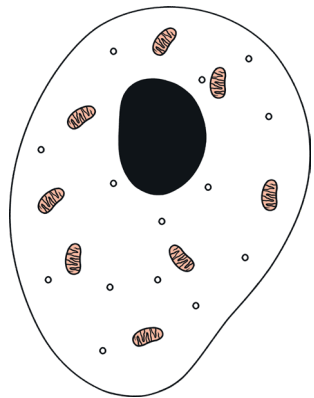
BEYOND

chloroplasts



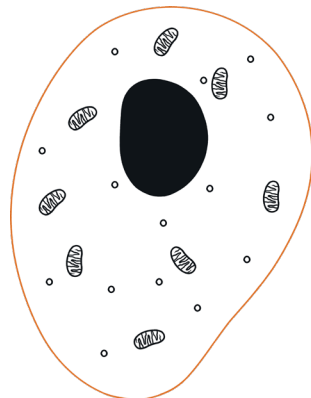
BEYOND

mitochondria



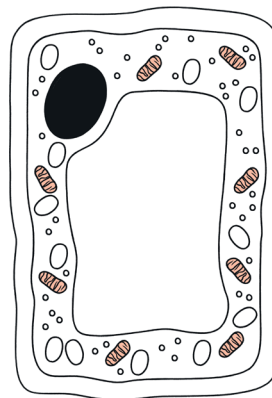
BEYOND

cell membrane



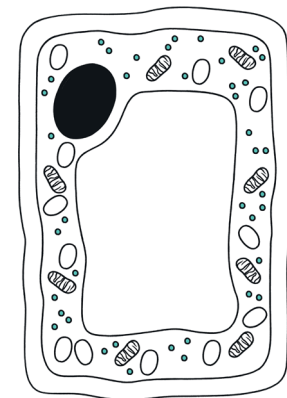
BEYOND

mitochondria



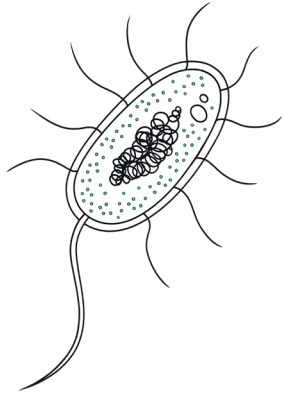
BEYOND

ribosomes



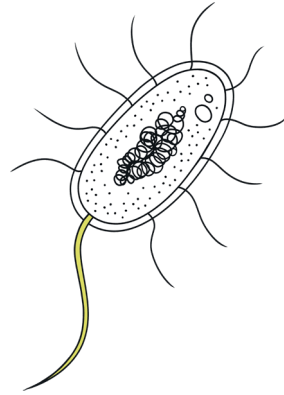
BEYOND

**ribsomes**



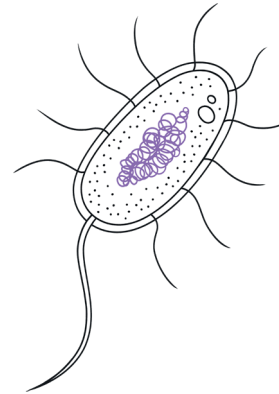
BEYOND

**flagellum**



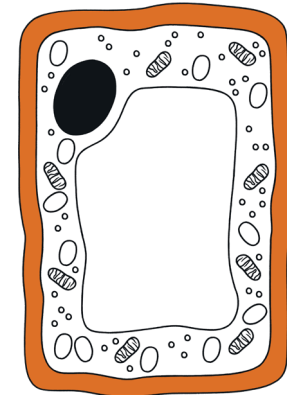
BEYOND

**DNA loop**



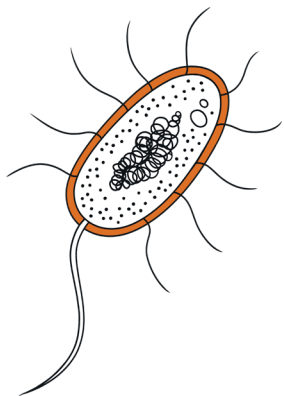
BEYOND

**cell wall**



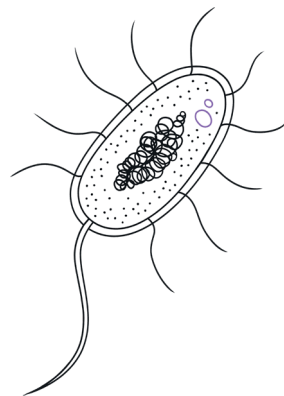
BEYOND

**cell wall**



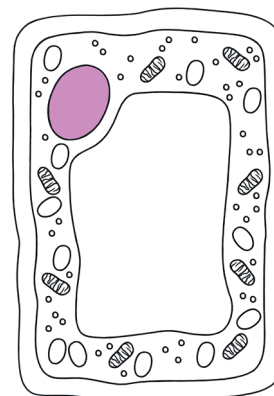
BEYOND

**plasmids**



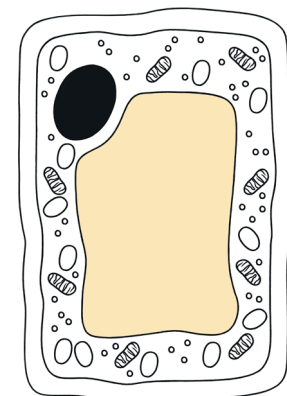
BEYOND

**nucleus**



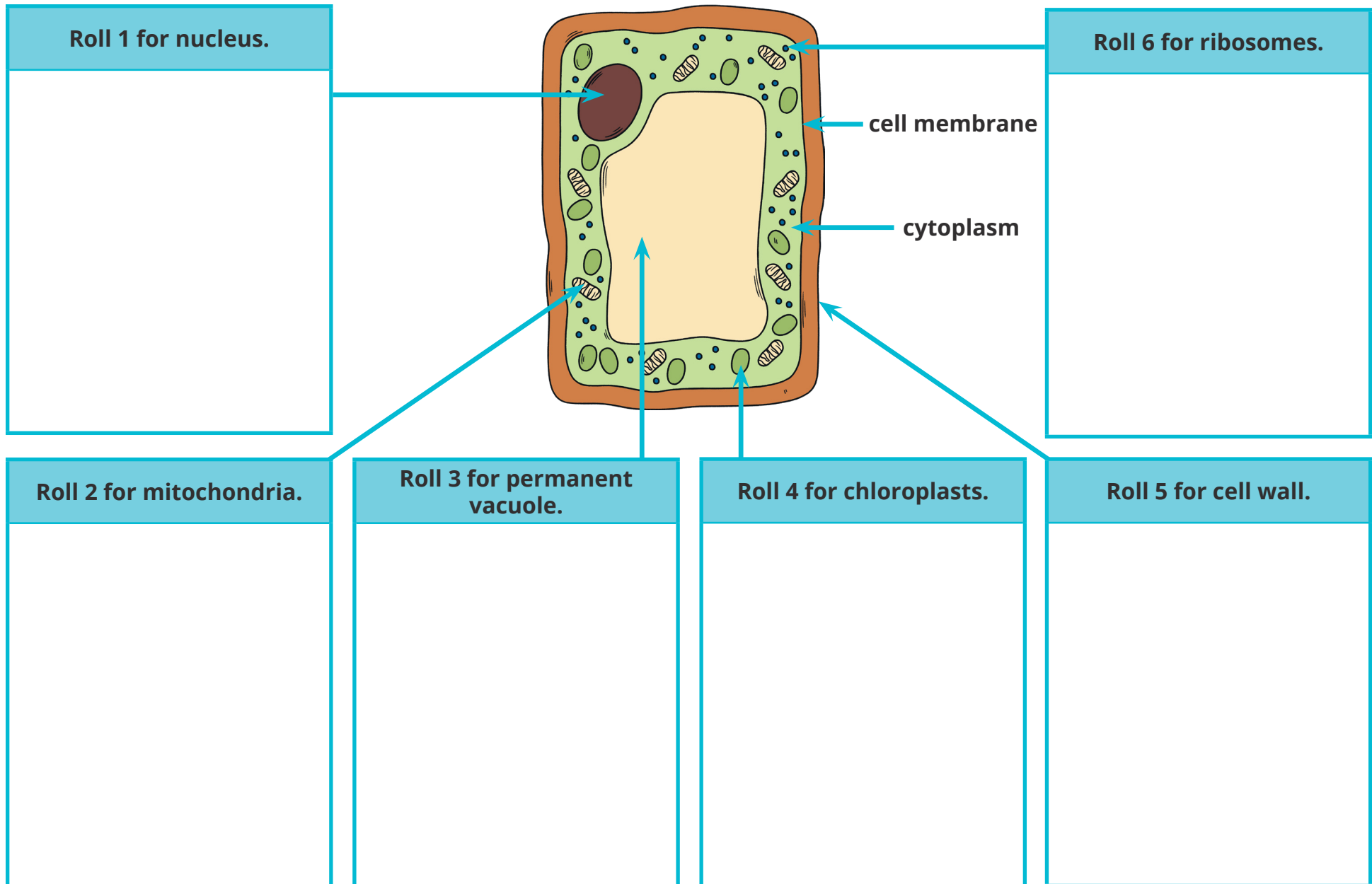
BEYOND

**permanent vacuole**

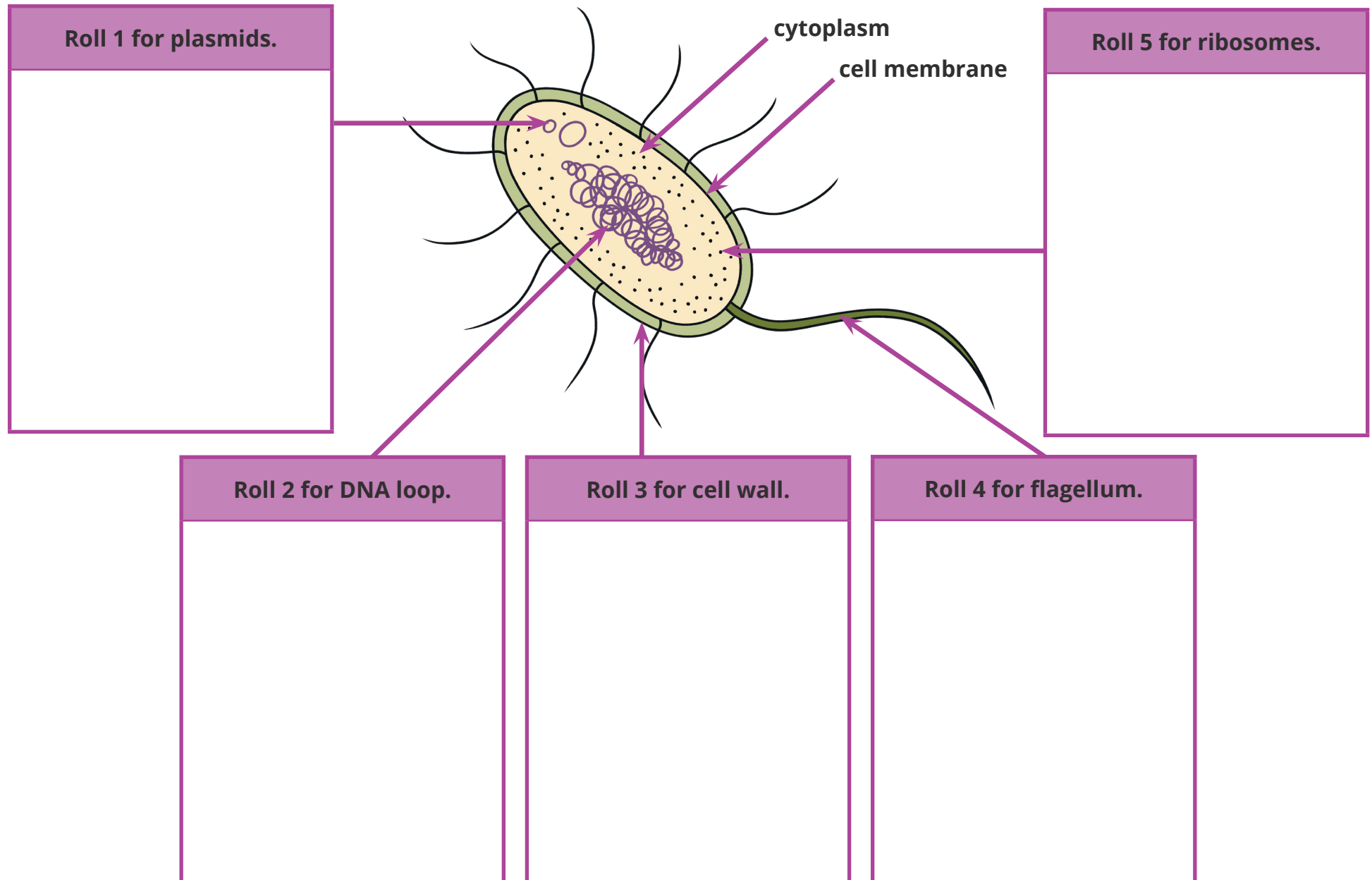


BEYOND

# Typical Plant Cell



# Typical Prokaryotic Cell



# Typical Animal Cell

