

The logo for Cardinal Newman College is a dark blue square containing the text 'CARDINAL' in white, 'NEWMAN' in light blue, and 'COLLEGE' in white.

**CARDINAL  
NEWMAN  
COLLEGE**

# **YOUR GUIDE TO NEWMAN**

**A LEVELS  
BTECS  
T LEVELS**





# HI!

**AT CARDINAL NEWMAN COLLEGE  
WE ARE BLESSED WITH WONDERFUL  
SURROUNDINGS FOR YOU TO WORK,  
LEARN AND RELAX IN. WE ARE A HAPPY  
AND DISTINCTIVE CATHOLIC SIXTH FORM  
COLLEGE, WITH A BEAUTIFUL CAMPUS,  
WELCOMING STUDENTS OF ALL FAITHS INTO  
OUR UNIQUE COMMUNITY.**



# 10

## GREAT REASONS TO STUDY AT NEWMAN

1

Newman has a **great city centre location**, whilst still being set in beautiful enclosed College grounds

.....

2

We are one of the highest performing **Sixth Form College Nationally**, making it an excellent choice for your sixth form studies

.....

3

Approximately **30%** of our university offers are at a Russell Group University

.....

4

The College offers **outstanding teaching** and learning, with teachers that really care

5

There are **over 50 different courses** to choose from, we also offer a mixed programme of study, which means you can combine BTECs and A-Levels together

.....

6

Newman has a **mind-boggling array of enrichment opportunities** so you can really enjoy your time at College. From Student Union and Sports Academies to our Medical Society, there really is something for everyone

.....

7

We pride ourselves on having **fantastic pastoral support**, our students really matter to us and we want you to have the best experience of College

8

Cardinal Newman College is the **Cambridge University Hub for Lancashire**, meaning that our students receive the best advice and guidance on applying to the top universities, direct from the experts at Cambridge University

.....

9

Exclusive to Newman, we offer a **curriculum plus programme**, which is additional support for your subjects, scheduled into your timetable

.....

10

There are a range of **outstanding university courses available** now at Newman, providing opportunities for your next step after A-Levels and BTEC Level 3

# PATHWAY CHOICES

IN YEAR 8/9 YOU WILL START TO CHOOSE YOUR GCSE SUBJECTS AND THINK ABOUT YOUR FUTURE CAREER ASPIRATIONS THE FOLLOWING GUIDE GIVES YOU AN IDEA OF PATHWAYS AVAILABLE TO YOU AS YOU MAKE YOUR OPTIONS AS YOU PROGRESS THROUGH EDUCATION.

## YEAR 8/9 OPTIONS

### YEAR 8/9 OPTIONS

Some subjects are **compulsory** to study at GCSE:

- English
- Maths
- Science

You will be able to choose from a variety of extra subjects:

- Arts (including Art & Design, Music, Dance, Drama & Media)
- Design & Technology
- Humanities (History & Geography)
- Modern Foreign Language

## POST 16 OPTIONS

### POST 16 OPTIONS

At Newman we offer a wide range of course options ranging from:

- A Levels
- BTEC Level 2
- BTEC Level 3
- T Levels
- HE\* Programme

## POST 18 OPTIONS

### POST 18 OPTIONS

- Further Education
- Apprenticeship post 18
- Employment
- Employment with Training

# PLANNING AHEAD AFTER YEAR 11



The end of Year 11 may feel like a long time off at the moment, but it is useful to be prepared and know what to expect. We've listed some of the different options which you can choose from at the end of Year 11.

You need to have a think about which choice is right for you, taking into account your strengths, weakness and your future plans.

## **SIXTH FORM COLLEGES:**

Offer a wide range of courses, mostly at Level 3, these include general qualifications such as A- Levels, BTECs and T-Levels, as well as some Level 2 courses such as GCSE resits in Maths and English and Level 2 BTECs.

## **FURTHER EDUCATION COLLEGES (FE COLLEGES):**

Often larger campus centres offering both young people aged 16+ and adults a range of full-time and part-time courses. Some FE Colleges specialise in specific areas like sport or art.

## **APPRENTICESHIPS:**

Give you the opportunity to get skills, experience and qualifications whilst getting paid. If you opt to do an apprenticeship, you will study for qualifications related to a specific job area such as Business Administration, ICT, Accounting, Automotive or Engineering.

# CHOOSING YOUR SUBJECTS

**CHOOSING WHAT YOU WANT TO STUDY AT COLLEGE CAN SEEM LIKE A DAUNTING TASK WITH SO MUCH CHOICE.**



There are lots of subjects to choose from and you don't want to risk picking something you might regret later, so it is important to choose subjects that you will enjoy studying for two years.

Here are our top five tips for choosing the right options for you...

- 1** Think about the subjects that you enjoy the most or are interested in and pick those
- 2** Try ranking all of your choices in order of preference, starting with the one you like the most all the way down to your least favourite, this will really help you to focus your choices and prioritise the subjects that you like
- 3** Do not just pick subjects that your friends are doing, you may end up in different classes anyway, so will be stuck doing something you don't enjoy without your friend for company!
- 4** Don't think of a career and then match the subjects to that career. Careers that sound fun or exciting may involve skills or subjects that you do not enjoy. Find a career that involves skills and subjects that you are good at and will enjoy doing, you will be more successful in life if you enjoy what you do!
- 5** If you're looking for inspiration for careers that involved your favourite subjects, check out our Careers on page xx.

# OUR COURSES

CLICK ON ANY OF OUR COURSES LISTED AND YOU WILL BE TAKEN TO THE COURSE PAGE ON OUR WEBSITE WHERE YOU WILL FIND MORE INFORMATION.

**A** ACCOUNTING  
ANCIENT HISTORY  
APPLIED LAW  
APPLIED SCIENCE  
APPLIED PSYCHOLOGY  
ART & DESIGN

**B** BIOLOGY  
BUSINESS STUDIES  
BUSINESS BTEC

**C** CHEMISTRY  
COMPUTER SCIENCE  
CORE MATHS  
CREATIVE DIGITAL  
MEDIA PRODUCTION  
CRIMINOLOGY

**D** DANCE  
DIGITAL PHOTOGRAPHY  
DIGITAL PRODUCTION,  
DESIGN & DEVELOPMENT  
DRAMA & THEATRE  
STUDIES

**E** ECONOMICS  
EDUCATION & CHILDCARE  
ENGLISH COMBINED  
ENGLISH LANGUAGE  
ENGLISH LITERATURE  
ETHICS, PHILOSOPHY &  
RELIGION

**F** FILM STUDIES  
FINE ART  
FRENCH  
FURTHER MATHS

**G** GEOGRAPHY  
GERMAN  
GRAPHIC DESIGN

**H** HEALTH & SOCIAL CARE

**I** ICT

**L** LAW



**M** MATHS  
MEDIA STUDIES  
MODERN WORLD HISTORY  
MUSIC  
MUSIC PERFORMANCE  
MUSIC TECHNOLOGY

**P** PERFORMING ARTS  
- ACTING  
- DANCE  
- MUSICAL THEATRE  
PHILOSOPHY  
PHYSICAL EDUCATION  
PHYSICS

POLITICS  
PSYCHOLOGY

**S** SOCIOLOGY  
SPANISH  
SPORT  
STATISTICS

**T** TEXTILES  
TRAVEL & TOURISM



# ENTRY CRITERIA



## YOU CAN CHOOSE TO STUDY THREE OR FOUR A-LEVELS.

To study four A-Levels you will need a GCSE point score of 6.7 or above (mainly 7s at GCSE).

To study a mixed programme of BTECs and A-Levels you need a GCSE point score of 5.7 or above (mainly 6s and some 5s at GCSE).

If you achieve at least five grade 7s or higher, you may be eligible for the HE\* Programme.

## ENTRY REQUIREMENTS SUMMARY

LEVEL OF COURSE	GCSE GRADES REQUIRED
A Level	At least five grade 5s at GCSE, including at least a grade 4 in GCSE English Language and Maths*
HE* Programme	At least five 7s at GCSE
BTEC Extended Diploma, Diploma and Extended Certificate	At least five 4s at GCSE
BTEC First Certificates	At least three 3s at GCSE including at least a 4 in English Language or Maths

\*Unless otherwise stated on the College website

# CAREERS

## USING ART

- Fine Artist
- Illustrator
- Print maker
- Fashion/textile design
- Graphic design
- Photography
- 3D Design
- Animation
- Museum or gallery work



## USING TEXTILES

- Costume designer
- Fashion designer
- Interior designer

## USING PHOTOGRAPHY

- Illustration
- Film
- Journalism
- Advertising
- Graphics
- Visual communications
- Fashion
- Marketing



## USING MEDIA

- Media planner
- Programme researcher
- Television/film producer
- Web content manager

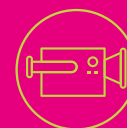


## USING CREATIVE DIGITAL MEDIA

- Animator
- Audio visual technician
- Advertising copywriter
- Programme researcher
- Social media manager

## USING GRAPHICS

- Animation
- Advertising
- Games design
- Web design
- Architecture



## USING FILM STUDIES

- Film director
- Television/film/video producer
- Television
- Broadcast presenter

## USING MUSIC

- Radio producer
- Musician
- Sound technician
- Events manager
- Radio broadcast assistant
- Composer
- Producer
- Performer



### USING DRAMA & THEATRE

- Actor
- Dancer
- Theatre director
- Television presenter
- Cruise ship performer



### USING DANCE

- Dancer
- Choreographer



### USING PHILOSOPHY

- Publishing
- Teaching
- Welfare services
- Politics
- Civil services

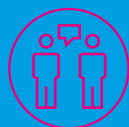
### USING ENGLISH

- Journalism
- Public relations
- Teaching
- Lecturing
- Publishing
- Marketing
- Human Resources
- Advertising
- Academic librarian
- Advertising copy writer



### USING RELIGIOUS STUDIES

- Teaching
- Welfare
- Politics
- Civil service
- Management
- Accountancy
- Law



### USING MODERN FOREIGN LANGUAGES

- Interpreter
- Translator
- Teaching



### USING POLITICS

- Public affairs
- Civil service
- Political journalist
- Member of parliament



### USING LAW

- Paralegal
- Solicitors
- Journalism
- Prison service
- Social services



### USING HISTORY

- Teaching
- Archivist
- Archaeology
- Media
- Marketing
- Business Administration



### USING GEOGRAPHY

- Teaching
- Public sector
- Civil service
- Environmental sectors



### USING COMPUTER SCIENCE

- Games development
- IT consultant
- Data analyst
- Software engineering



### USING ICT

- Business analyst
- Applications developer
- Network engineer
- Applications developer
- Software engineer
- Graphic designer
- Website contents manager
- Computer animator





## USING SPORT

- Coaching
- Physiotherapy
- Leisure industry
- Health
- Armed forces




## USING ACCOUNTING

- Accountant
- Finance
- Company secretary



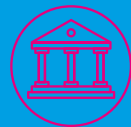
## USING MATHS

- Teaching
- Data analyst
- Accountant
- Actuary
- Finance



## USING SCIENCE

- Aeronautical
- Acoustic engineering
- Pharmacy
- Veterinary Science
- Medicine
- Nursing
- Marine biology
- Dentistry



## USING SOCIOLOGY

- Legal professions
- Civil service
- Social work
- Local government
- Teaching



## USING CRIMINOLOGY

- Probation service
- Civil service
- Forensic psychology
- Police force



## USING BUSINESS

- HR/personnel
- Business advisor
- Advertising
- Public relations



## USING PSYCHOLOGY

- Human resources
- Teaching
- Marketing
- Law
- Care professions



## USING CHILDREN'S PLAY LEARNING AND DEVELOPMENT

- Children's nursing
- Primary school teaching
- Social work



## USING HEALTH & SOCIAL CARE

- Mental health
- Nursing
- Radiotherapy
- Occupational therapy
- Physiotherapy



## USING TRAVEL & TOURISM

- Cabin crew
- Holiday reps
- Events & hospitality management
- Travel agencies
- Public relations
- Travel journalism
- Tourism marketing



# WE ARE NEWMAN

**THIS IS THE END OF THE INFORMATION HERE, BUT THERE IS LOADS MORE ONLINE. VISIT OUR WEBSITE OR FOLLOW US ON OUR SOCIAL MEDIA CHANNELS.**



**WWW.CARDINALNEWMAN.AC.UK**



**CARDINALNEWMANCOLLEGE**



**@NEWMAN\_COLLEGE**



**NEWMAN\_COLLEGE**

